

London Borough of Hackney
 Planning - Received

AMENDED

REV. DATE DESCRIPTION
 B JULY 2006 AMENDED SITE PLAN
 A JUNE 2006 DIMENSION AND NOTATION ADDED

GML Architects
 40 Parkington Street
 London EC1Y 8BE
 Tel: 020 7490 4290
 Fax: 020 7490 4084
 info@gmlarchitects.co.uk

11/20 WESTGATE STREET
 E8
 AUG 2008

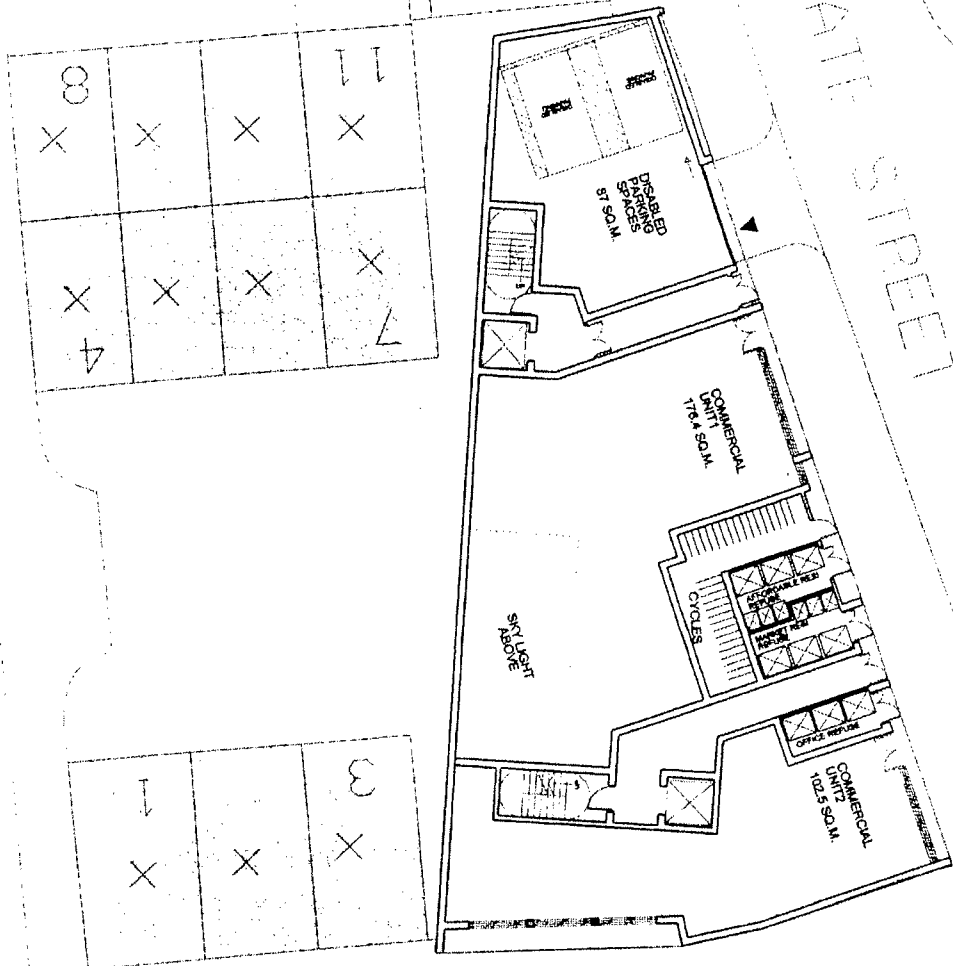
1:250
 1:500

SITE PLAN
 318B04 B

London Borough of Hackney
 16-26 Mark St. Post Room
 RECEIVED

16-26

WESTGATE STREET



GROUND FLOOR PLAN
 COMMERCIAL FLOOR AREA: 285.9 SQ.M.

AMENDED

London Borough of Hackney
 Planning - Received

A JULY 2008 MODIFICATION OF DOORS
 ALONG THE SITE FRONTAGE
 REV DATE DESCRIPTION

GML Architects
 40 Finsbury Street
 London EC1Y 8RE
 Tel: 020 7490 4399
 Fax: 020 7490 4284
 info@gmlarchitects.co.uk

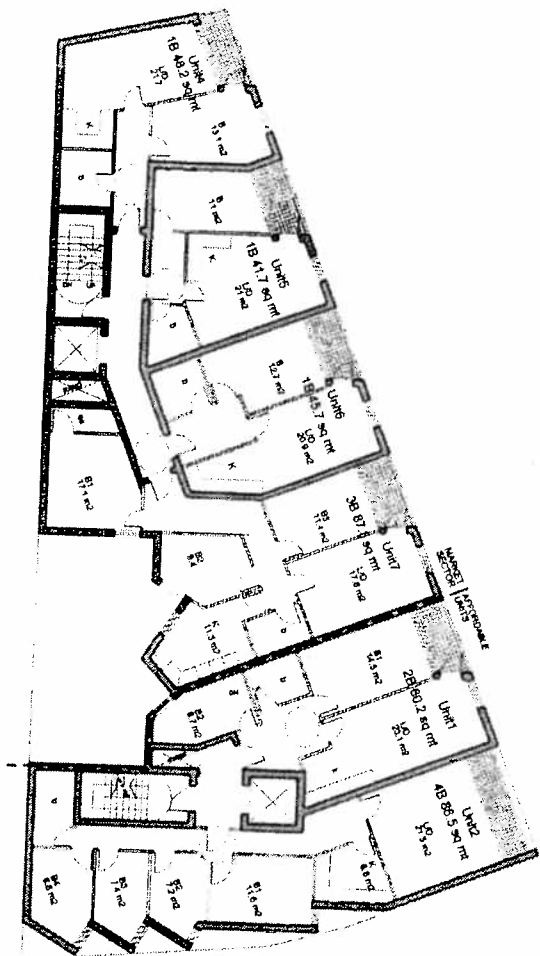
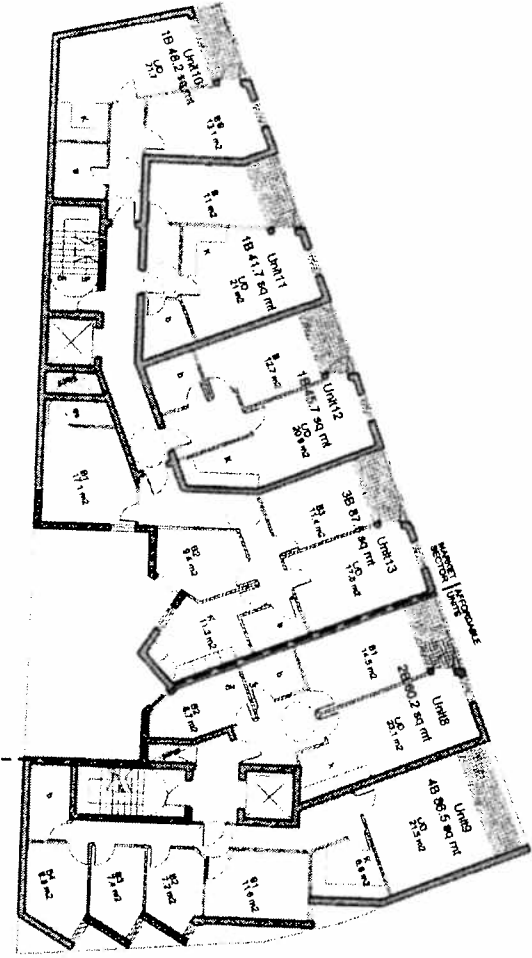
11-23 WESTGATE STREET
 E8
 AUG 2008

1:100 @ A1
 1:200 @ A3

GROUND FLOOR PLAN

3186-06 A

London Borough of Hackney
 Planning
 N & E 263 MAR 10 Post Room
 RECEIVED



FIRST FLOOR PLAN
 GROSS FLOOR AREA: 487 SQ.M.

AMENDED

London Borough of Hackney
 Planning - Received

SECOND FLOOR PLAN
 GROSS FLOOR AREA: 487 SQ.M.



A JULY 2008 MODIFICATION OF WINDOWS
 AT THE REAR FACADE
 DESCRIPTION

REV DATE

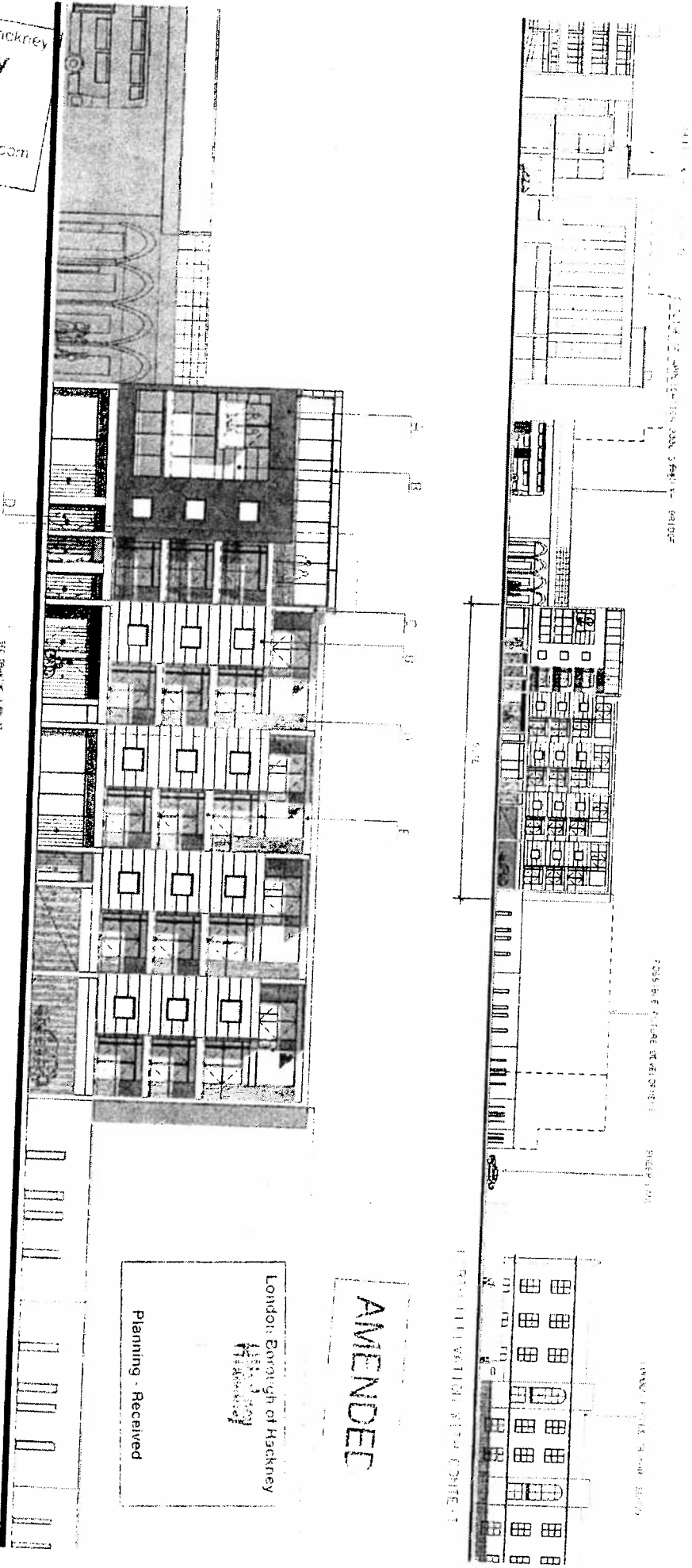
GML Architects
 40 Featherstone Street
 London EC1Y 8HT
 Tel: 020 7480 4288
 Fax: 020 7480 4284
 info@gmlearchitects.co.uk

1123 WESTGATE STREET
 E8
 AUG 2008

1:1000
 1:2000

FIRST & SECOND FLOOR PLAN
 3188-07 A

London Borough of Hackney
 N.P.R. 26 - Main St Post Room
 RECEIVED



- 1 DARK BLUE RENDER
- 2 TIE IN CLADDING
- 3 LOWERED METAL CLADDING
- 4 LOWER STAIRS
- 5 METAL COVER
- 6 GRAN GRANIT RENDER
- 7 METAL COVERING

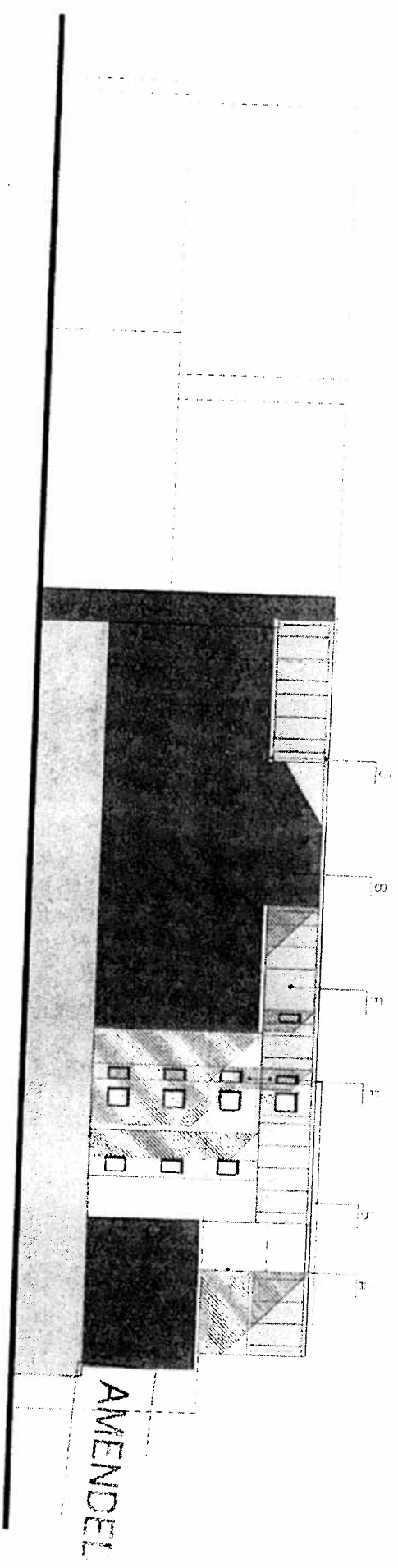
London Borough of Hackney
 Planning - Received

AMENDED

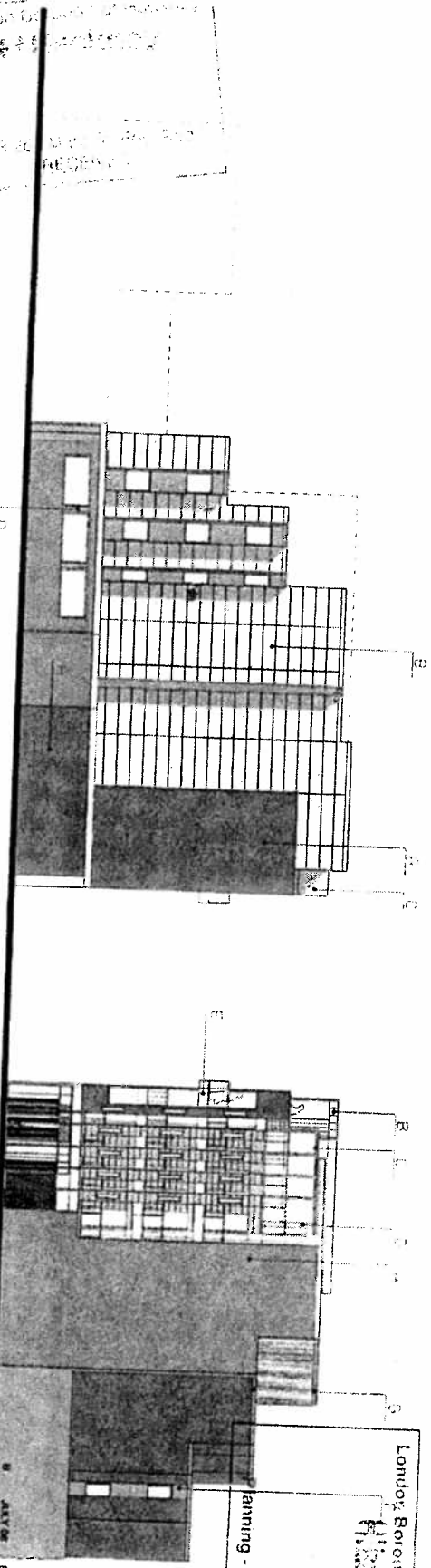
11-23 WESTGATE STREET
 AUG 2006

1:500 @ A3
 1:2500 @ A1
 3188-06

GML Architects
 40 Featherstone Street
 London EC1Y 8BE
 Tel: 020 7460 4298
 Fax: 020 7460 0864
 info@gmlarchitects.co.uk



AMENDEL

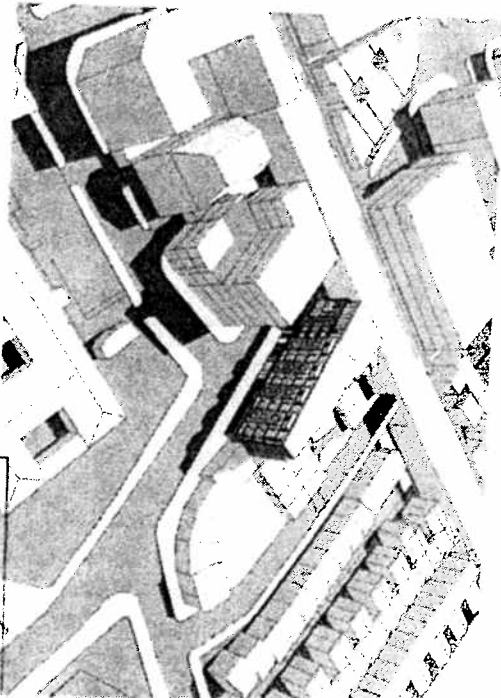
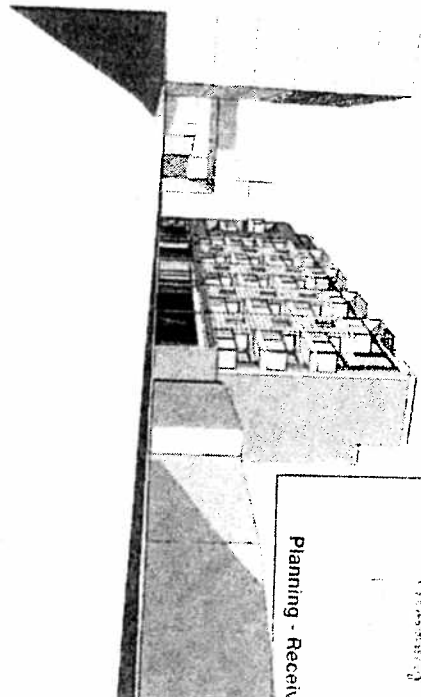
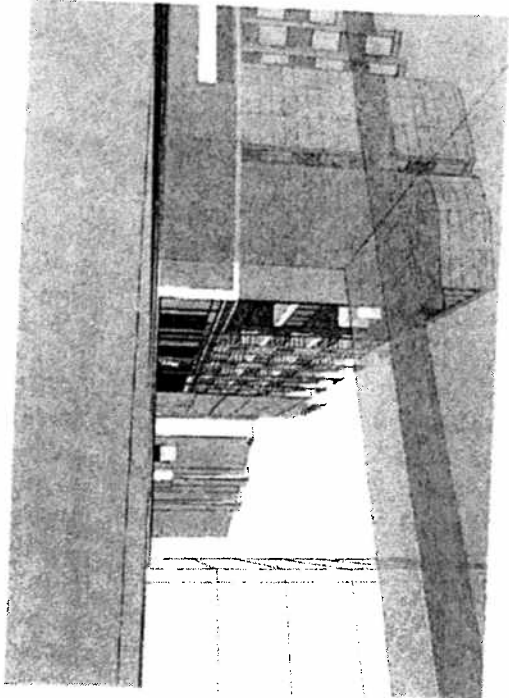


London Borough of Hackney
 Planning - Received

- 01: NORTH SIDE - REULEX
- 02: PETER CLARKE
- 03: TOWER BRIDGE CANOPY
- 04: TOWER BRIDGE
- 05: TOWER BRIDGE
- 06: TOWER BRIDGE
- 07: TOWER BRIDGE
- 08: TOWER BRIDGE
- 09: TOWER BRIDGE
- 10: TOWER BRIDGE
- 11: TOWER BRIDGE
- 12: TOWER BRIDGE
- 13: TOWER BRIDGE
- 14: TOWER BRIDGE
- 15: TOWER BRIDGE
- 16: TOWER BRIDGE
- 17: TOWER BRIDGE
- 18: TOWER BRIDGE
- 19: TOWER BRIDGE
- 20: TOWER BRIDGE

A MAY 08 ELEVATION AMENDED
 REV DATE
 B
 ELEVATION AMENDED
 GML Architects
 40 Finsbury Street
 London EC1Y 8SE
 Tel: 020 7490 4299
 Fax: 020 7490 4084
 info@gmlarchitects.co.uk
 11-23 WESTGATE STREET
 E8
 AUG 2008
 1:100@A1
 1:200@A3
 EAST & WEST ELEVATION 2
 3180-10
 B

London Borough of Hackney
Hackney
 N & R 263 Mare St Post Room
 RECEIVED



London Borough of Hackney
Hackney
 Planning - Received

AMENDED

REV	DATE	DESCRIPTION	DESIGNED BY	DATE

GML Architects
 40 Featherstone Street
 London EC1Y 8NE
 Tel: 020 7480 4289
 Fax: 020 7480 4884
 info@gmlarchitects.co.uk

11-23 WESTGATE STREET
 E9
 AUG 2008
 NTS

MASSING IN EXISTING CONTEXT
 3185-12
 A